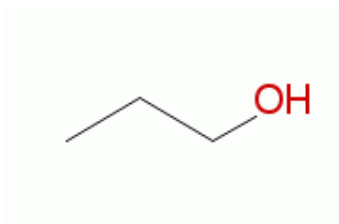
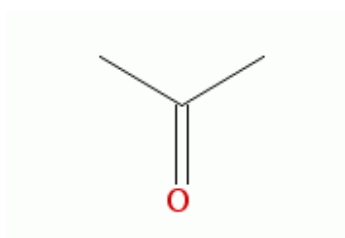


Neutral Functional Groups

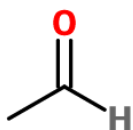
Hydroxyl or Alcohol (primary)



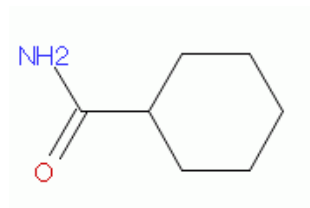
Ketone



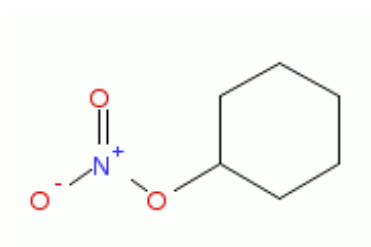
Aldehyde



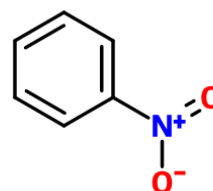
Amide



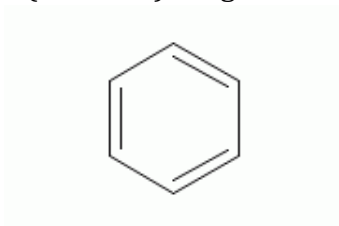
Nitrate



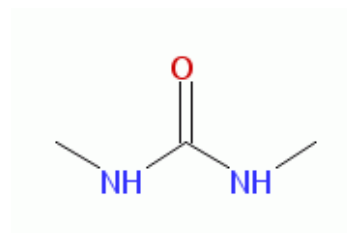
Nitro



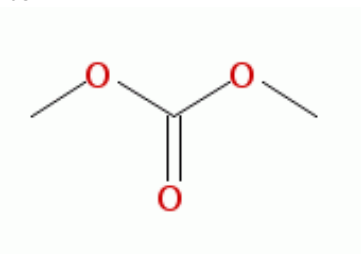
Aromatic (Benzene) Ring



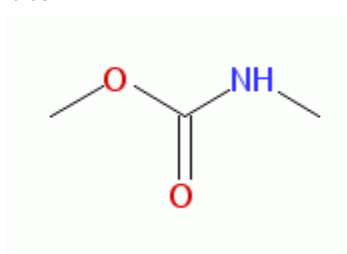
Urea



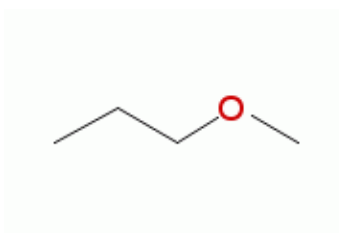
Carbonate



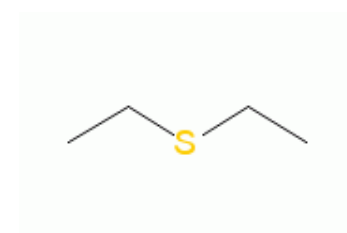
Carbamate



Ether

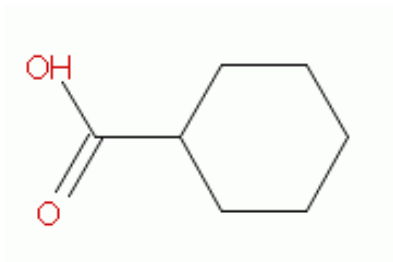


Thioether

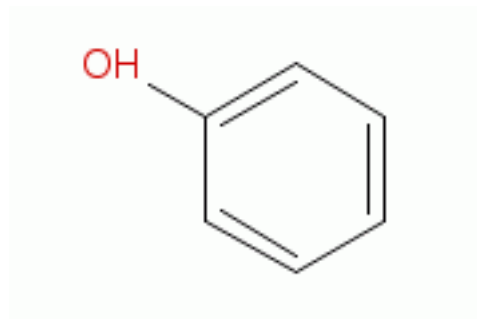


Acidic Functional Groups

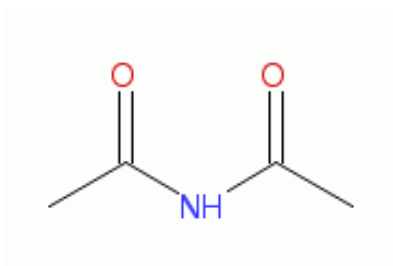
Carboxyl



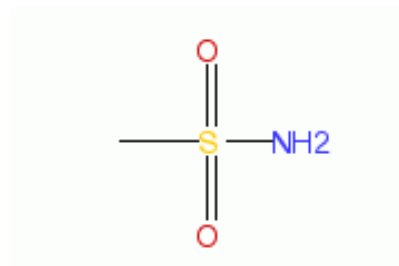
Phenol



Imide

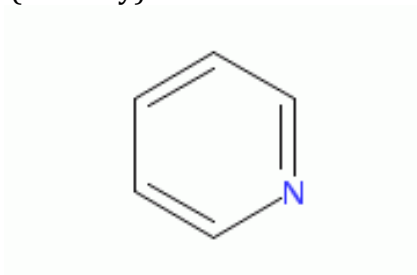


Sulfonamide

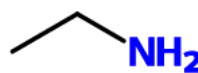


Basic Functional Groups

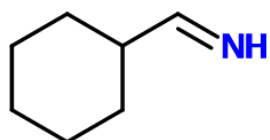
Amine (Tertiary)



Amine (Primary)



Imine



Amidine

